

GAS BREAKER EXCESS FLOW SAFETY VALVES



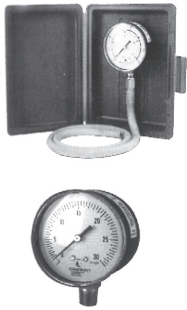
GASBREAKER® EXCESS FLOW SAFETY VALVES
for low and medium pressure

Item #	Description Gasbreaker Excess Flow Valve	Typical Load (scfh)	Maximum Load (BTU/hour)	Size
FPG-GB090-075	70 CFA Appliance	70	70,000	3/4"
FPG-GB150-075	100CFA Appliance	100	125,000	3/4"
FPG-GB300-075	175 CFH Meter	175	275,000	3/4"
FPG-GB300-100	175CFH Meter	175	275,000	1"
FPG-GB400-100	250 CFH Meter	250	375,000	1"
FPG-GB600-100	CFH (TBD) Meter*	*	*	1"

*Pending Approval

PRESSURE GAUGES

LOW PRESSURE GAUGE



2 1/2" Dial, 1/4" NPT Inlet
0-35" WC, 0-20 Oz.

Item #	Description
50P-5	Replacement gauge with hose
50P-2	Gauge w/ hose mounted in plastic case
1D4976	Hose Adaptor
1E4840	Replacement hose only
50-2	W.C. gauge w/1/4" MNPT

LOW PRESSURE TEST ADAPTERS



Used for installing a test port in copper tubing lines

Item #	Size
ME-1328	3/8" M x F flare
ME-1331	1/2" M x F flare
ME-1332	5/8" M x F flare

QTL051 SERVICEMAN'S FRIEND



For use with flow meters, manometers, and other pressure test equipment. One end is 1/8" MNPT, 1/4" MNPT, and special 5/16" x 32 thread. Other end has regular hose fitting and 1/8" MNPT. Hose can be used on either end.

PRESSURE GAUGES (CONTINUED)



HIGH PRESSURE GAUGES

2" Dial, 1/4" NPT Bottom or Back Inlet

Pressure Range	Bottom Inlet	Back Inlet
0-5 #	ME-J499	---
0-15 #	ME-J500	ME-J510
0-30 #	ME-J501	ME-J511
0-60 #	ME-J502	ME-J512
0-100 #	ME-J503	ME-J513
0-200 #	ME-J504	---
0-300 #	ME-J506	ME-J516
0-400 #	ME-J542*	---

* For LPG or NH3 Service



BRASS CASE HIGH PRESSURE GAUGES

2" Dial, 1/4" NPT Bottom Inlet

Item #	Pressure Range
B115-30	0-30 #
B115-60	0-60 #
B115-100	0-100 #
B115-300	0-300 #



LIQUID FILLED GAUGES

Liquid filled gauges dampen pulsation and vibration under severe operating conditions such as compressors, pumps, etc.

Pressure Range	Bottom Inlet	Back Inlet
0-300#	B213-300BM-S	----
0-400 #	B213-400BM	B213-400BK



D2020 MAGNAHELIC PRESSURE GAUGE

4" Dial, 1/8" high and low pressure taps. Indicates positive, negative, or differential pressure. Rated total pressure: -20" Hg. to 15 psig.

DA432 CARRYING CASE



GA P500
4 1/2" Steel Case Pressure Gauge
0-300 #, 1/4" Bottom Inlet

PRESSURE GAUGE ACCESSORIES

PRESSURE GAUGE ADAPTER ME-J595



1/2" MNPT X 1/2" FNPT with 1/4" FNPT opening for installation of pressure gauge. Ideal for installation in outlet of first stage regulator to indicate outlet pressure.



MINIATURE RAY SNUBBER RS-22

1/4" Male x Female Snubber comes with three pistons for different snubbing levels.

PRESSURE TEST ASSEMBLIES

POL X POL TEST BLOCKS ME-J601



Test block installs between container service valve and regulator. Pressurize line, then close service valve. A drop in pressure will indicate a downstream leak. With the ME-J601, you can bleed line pressure. A subsequent increase in line pressure will indicate a leaking service valve.

Item #	Description
ME-J600	MPOL X FPOL Test Block w/ 0-300 psi gauge
ME-J601	MPOL X FPOL Test Block w/ 0-300 psi gauge and bleed valve



STA-1

This pressure test assembly is to check for possible gas leaks in piping systems where service is interrupted, such as "out of gas" conditions. It is not to be used as the only means of testing new gas systems or existing systems where new equipment is installed. See NFPA54 for leak testing requirements in these systems. Schraeder valve (pack of 6) and hardshell carrying case included.



STA-2

Male X Female POL flexible tool for pressure testing service lines following out of gas calls. Installs between the service valve and regulator pigtail.

- Flexible design allows for easy installation with minimum movement of pigtail, even in underground tanks.
- Shut-off valve prevents leaking service valve from affecting pressure test.
- Shipped in a hardshell plastic case.



VAC-TEST

This test gauge checks the vacuum pressure on pre-purged tanks.

PRESSURE TEST ASSEMBLIES (CONTINUED)



HIGH PRESSURE TEST BLOCK HPTA-30

For pressure testing new piping systems

G64-002 SCHRADER VALVE



PETE'S PLUG II PE-100

Pete's Plug II is a 1/4" pressure and temperature test plug with two self closing valves.

PE-300 0-300# SS GAUGE W/ 4" DIAL & CASE

PE-500 GAUGE ADAPTOR



ME-J608B-02 SCHRAEDER VALVE, 1/8"



B85PC02

PRESS CHECK ADAPTOR

Designed for installation in 1/8"FP threaded opening, the Press-Check Adaptor is the key to testing the gas distribution system without breaking the line.



B85PC04

Same as B85PC02 but with 1/4" threads



B85PL02

PRESS LOK ADAPTOR

Adaptor links the testing device to the B85PC02 press check adaptor and activates the check valve mechanism.

WATER MANOMETERS



D1211-16

SLACK TUBE MANOMETER

Handy roll-up type manometer with laboratory accuracy. Furnished with magnetic clips and open and close connectors. 8" - 0 - 8" range.



D1212

SLACK TUBE MANOMETER KIT

Kit includes:

- D1211-16 slack tube manometer
- Plastic carrying case
- 3/4 oz. bottle of fluorescent green color concentrate with wetting agent
- Two 1/8" pipe thread rubber tubing adaptors
- 1/8" to 1/4" pipe thread bushing
- 3' of 1/4" ID rubber tubing
- Rubber tubing adaptor to fit standard 7/16" spud.



D1222

Economy Water Manometer

Rigid manometer with 2 magnets, bottle of dye, and 3' of 5/16" ID tubing.

EESL1006

Replacement Hose

ELECTRONIC MANOMETERS



EM150

The EM150 provides a simple, time conscious alternative to U-tube pressure testing. This unit measures ± 20 " W.C. Ideal for testing residential and light commercial scenarios. The rugged EM150 has a protective rubber boot and integrated magnet. Unit comes with tubing and adapter. The EM150 is designed to measure at an accuracy of $\pm 1.5\%$.

Features:

- Auto power off
- Rubber boot with built in magnet
- .05 resolution below 9.95"
- -20 to +20" measurement range
- Battery life of 50 hours (min.) with alkaline battery

Accessories:

- AC319 - Soft shell carrying case
- BF100 - Replacement brass adapter

PRESTO-TAP LEAK DETECTION SYSTEM

The Presto-Tap pigtail has a one-way valve assembly permanently installed. With the use of the temperature/pressure gauge, you can determine if there is liquid in the tank. This helps you determine if your customer is truly "out of gas".



PIGTAILS WITH PRESSURE TAPS

ITEM #	DESCRIPTION
PT1401	1/4" M.POL x M.POL - 12"
PT1402	1/4" M.POL x 1/4" MNPT - 12"
PT3801	3/8" M.POL x M.POL - 12"



PT6800 300 PSI AMBIENT TEMPERATURE GAUGE W/HOLSTER

Gauge indicates tank pressure at appropriate ambient temperature and when compared to surrounding temperature readings will indicate if liquid is present in the tank and if enough pressure is present to support the system.



PT2000/RV REGULATOR VALVE (HIGH & LOW PRESSURE)

PT 2000/RV-L REGULATOR VALVE (LOW PRESSURE)

These valves are designed to be installed into regulator pressure taps (1/8" NPT), or other pressure taps in the system, for pressure reading without "breaking the system".



PT-RV/QA REGULATOR VALVE QUICK ADAPTER

Attaches to a Presto-Tap regulator valve. It has 1/4" FNPT inlet for attaching a standard pressure gauge.

MAGNETIC FLOAT GAUGES

For lift truck cylinders, ASME tanks, 420# cylinders, and motor fuel tanks



DOMESTIC TANK GAUGES

The item numbers are for junior flush mounted gauges. If the gauge is mounted on a riser, add the height of the riser to the part number, i.e. a gauge for a 41" diameter tank with a 4 1/2" riser is TJ41-4 1/2. For a senior gauge, substitute an "S" in place of the "J" in the item number.

Available in remote and non-remote styles. Standard dial is non-remote.

Tank Diameter	Item #		
	Flanged*	1" Threaded	1 1/4" Threaded
24"	TJ24	TJ24-BS-1"	TJ24-BS
30"	TJ30	TJ30-BS-1"	TJ30-BS
37"	TJ37	TJ37-BS-1"	TJ37-BS
41"	TJ41	TJ41-BS-1"	TJ41-BS

* Flanged gauges are also available with senior heads.

TYPICAL GAUGE SIZING GUIDE

TANK

120 Gallon	24" diameter
250/350 Gallon	30" diameter
500 Gallon	37" diameter
1000 Gallon	41" diameter

LIFT TRUCK CYLINDER GAUGES

Cylinder Size	Item #		
	Flange Mounted	3/4" Threaded	1 1/4" Threaded
20# Vertical	LT20-V	—	LT20-V-BS
20# Horizontal	LT20-H	—	LT20-H-BS
20# Universal	LT20-U	—	LT20-U-BS
33# Vertical	LT33-V	—	LT33-V-BS
33# Horizontal	LT33-H	—	LT33-H-BS
33# Universal	LT33-U	LT33-U-3/4	LT33-U-BS
43# Vertical	LT43-V	—	LT43-V-BS
43# Horizontal	LT43-H	—	LT43-H-BS
43# Universal	LT43-U	LT43-U-3/4	LT43-U-BS

MAGNETIC FLOAT GAUGES (CONTINUED)

MOTOR FUEL TANK GAUGES

Item #				Tank Dia.
Top Mount	Upper 45	Center Mount	Lower 45	
CVT10	CVA10	CVC10	CVAB10	10"
CVT12	CVA12	CVC12	CVAB12	12"
CVT13	CVA13	CVC13	CVAB13	13"
CVT14	CVA14	CVC14	CVAB14	14"
CVT16	CVA16	CVC16	CVAB16	16"
CVT18	CVA18	CVC18	CVAB18	18"
CVT20	CVA20	CVC20	CVAB20	20"
CVT24	CVA24	CVC24	CVAB24	24"

420# CYLINDER GAUGES

Item #	Description
TA237A	1 1/4" threaded gauge
JA250J	Junior flange mount gauge
FG3981-001	1" threaded gauge

150 GALLON HORIZONTAL GAUGE

Item #	Description
TA130 A	1 1/4" threaded gauge for top mount installation. For tank diameters of 24".

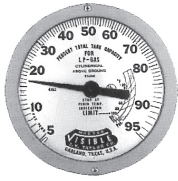
DFG3010

Replacement gauge for Manchester M681438L 100# A.S.M.E. Cylinder.

DFG3010-D

Dial for above replacement gauge.

MASTER GAUGES FOR LARGE STORAGE TANKS



Item #*	Tank Diameter
M072H4202B	72"
M109H4202B	108"
M129H4102B	130"

*Add -A suffix to include flange adaptor for tank inlet.



Item #	Tank Diameter
VIS5331-20	2 1/2" NPT x 8 bolt flange adaptor
M4102ADL	Taylor Replacement dial
R5015S00481	Rochester 8" dial
VIS4102BC	Replacement crystal - Taylor
VIS3350X2	Set of 8 screws
VIS4102BO	O-ring
VIS4102BG	Gasket
R003-00022	Rochester 8" crystal

BULK TRUCK FLOAT GAUGE

TAYLOR

"Roadmaster" Float Gauge for Bobtails & Transports.



Item #	Tank Diameter
RM1833	72"
RM1836	79"
RM2438	84"

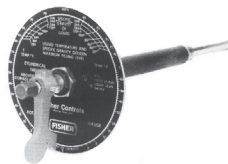
ROCHESTER

"Rough Rider" Float Gauge for Bobtails & Transports.

Item #	Tank Diameter
CM6339-11-72	72"
CM6339-11-79	79"

ROTARY GAUGE

For use in stationary or mobile tanks. Installs in 1" tank opening.

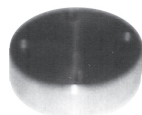


Item #	Description
J31L-2	Through 92" OD tanks
J31L-3L	Through 140" OD tanks
P322	Dial only ≤ 1200 gal
P323	Dial only > 1200 gal
P324	NH3 dial

REPLACEMENT PARTS

T10971	Rotary gauge cap/seat
T10958	Cap only

GAUGE DRILL GUIDE



Centers drill bit for drilling out broken gauge screws.

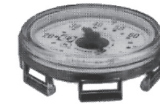
Item #	Gauge Size
FGDG-JR	Junior
FGDG-SR	Senior
FG-DG-JR-TAP	Junior
FD-DG-SR-TAP	Senior

REPLACEMENT DIAL ASSEMBLIES

ROCHESTER DIALS



R5-39



RS17-5-39

Item #	Dial Size	Application
R5-1	Senior	ASME 5-95%
R5-39	Junior Remote Ready	ASME 5-95%
R5-465	Junior	Vertical DOT 10-82%
R5-1951	Snap on	Vertical DOT 10-80%
R5-917	Junior	Motor Fuel Tank
R5-413	Screw On	20# Forklift Cylinder
R5-414	Universal	33 1/2# Forklift Cyl.
R5-415	Universal	43 1/2# Forklift Cyl.
R5-2591	Snap On	33 1/2# w/ 3/4" gauge
R5-2445	Snap On	33 1/2# w/ 1 1/4" gauge

UNIVERSAL DIALS

For use on ASME tanks.



1284-20-002

Item #	Dial Size
RS17-5-1	Senior glue-on kit
RS17-5-39	Junior glue-on kit
CVD-U	Taylor Junior screw-on kit
1284-20-002	Sherwood Junior Screw On



CVD-BS

TAYLOR VISIBLE REPLACEMENT DIALS

For brass threaded gauges.

Item #	Application
CVD-BS	Domestic tanks
CVD-MF	Motor fuel tanks
CVD-20LT-U	20# universal forklift cylinder
*CVD-33LT-U	33 1/2# universal forklift cylinder, JR bolt on
*CVD-33LT-3/4	33 1/2# universal forklift cylinder, 3/4 threaded
*CVD-33LT-1 1/4	33 1/2# universal forklift cylinder, 1 1/4 threaded

*43# cylinders use the same replacement dials as the 33# cylinder

GAUGE REPLACEMENT PARTS:

Gaskets

Item #	Gauge Size
VISJGG	Junior
VISSGG	Senior

Screws

Item #	Gauge Size
VISJGS	Junior
VISSGS	Senior



REMOTE INDICATING GAUGE PARTS



SENDING UNITS

Gauge types:

- R - Rochester
- T - Taylor

Item #	OHM	Type	Application
SU15-160	15-160	T	Ford (2000 and newer)
R5-952	15-160	R	Ford (2000 and newer)
R5-441	90/10	R	Chrysler ('90 & newer)
SU90-UNIV	90	T	GM (Mid '96 & older) (Also used w/remote receiver and PRINS Kits)
R5-801	90	R	GM (Mid '96 & older) (Also used w/remote receiver and PRINS Kits)
R5-599	40-250	R	GM (Mid '96 & newer)
R5-250	250-40	R	GM (2006 and newer)

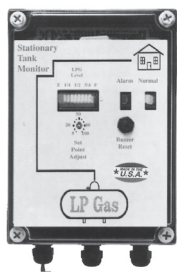


RECEIVER

S136520

Can be used for remote tank level reading in lieu of tying into gasoline gauge.

GAS LEVEL MONITORING SYSTEMS



SQUIBB-TAYLOR STATIONARY TANK MONITOR

For residential and commercial applications. This system consists of two components - a sensor installed at the propane tank and a monitor placed at a remote location. Propane level in the tank is displayed by the monitor. The 136619 monitor has an alarm that can be adjusted between 0-99%.

Item #	Application
136617	Residential/Small commercial - 9 V battery
136619	Commercial/Industrial - 120 V AC
136603	Gauge Sensor

GAS AND CO DETECTORS



SENSIT-TKX

- Finds leaks quickly
- High sensitivity
- Tick rate control
- Low initial cost
- Low maintenance



SENSIT-CO

- Fast response
- Backlit display
- Rotary vane pump
- Lowest cost, long life sensors
- Infrared downloading of saved data



PG1

The portable PG1 gas detector offers a faster, easier way to test for the presence of propane, butane, and natural gas leaks. Only 7 1/2" long, its compact design allows testing in the smallest areas! Powered by 2 AAA batteries.



BOLO

The BOLO is a battery operated (2 AA's) for the detection of combustible gas leaks. The unit has a folding sensor wand that detects natural gas, propane, hydrogen, butane and more. The BOLO has a variable tick rate alert and dual LED visual alert. Kit includes: detector, soft pouch, batteries, earphones and hard shell case.